

EDGE PROTECTION FENCING

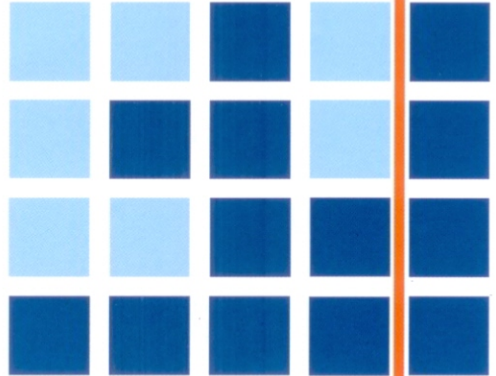
Simple lock-in installation

Maximum protection

Built in safety kickplate

Re-usable asset

Complies to AS 1657-1992



New South Wales

CCS Industries EDGE PROTECTION FENCING

This simple to install system offers site personnel maximum protection on the perimeter of construction slabs, around stair and lift wells, excavations, etc.

The removable panels, with built-in kickplates, and post system is easily transported, installed, removed and stored.

CCS Edge Protection Fence Panel

This 1000 mm high x 2400 mm galvanised welded panel is manufactured from 4 mm steel wire at centres not exceeding 50 mm x 50 mm to comply with AS/NZS 4576 - 1995 'Guidelines for Scaffolding'.

Each panel features a rectangular rolled top and triangular bottom incorporating a galvanised kickplate that helps prevent objects from falling through the panel bottom.

Galvanised Posts

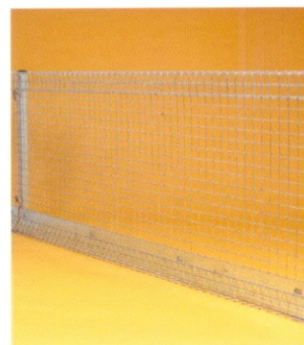
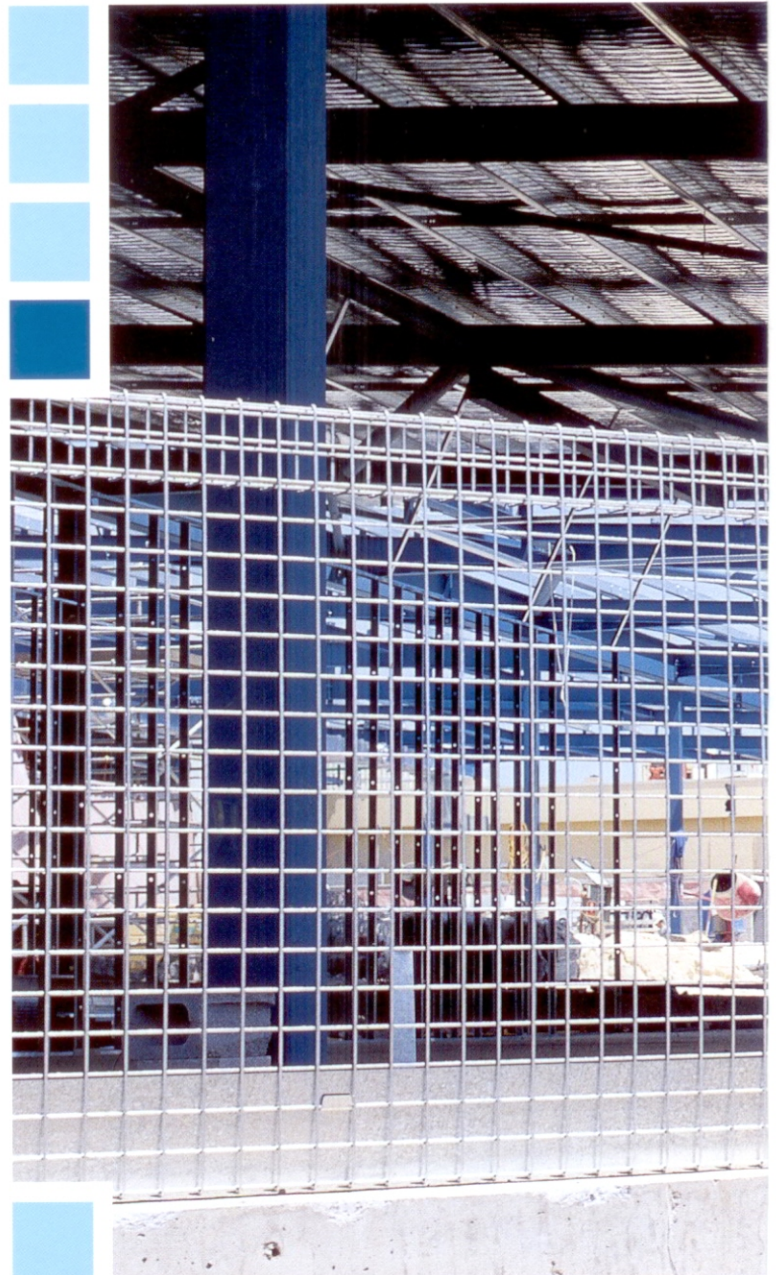
Galvanised posts are available in RHS 50 mm square manufactured to comply to AS 1657 - 1992 'Fixed Platform, Walkways, Stairways and Ladders - Design, Construction and Installation'. CCS Industries posts comply with design loads and coating protection.

The Slide and Lock Square Post

The 1005 mm high post incorporates top and bottom wire panel holding lugs with slide and lock assemblies, making panel installation and removal quick and simple.

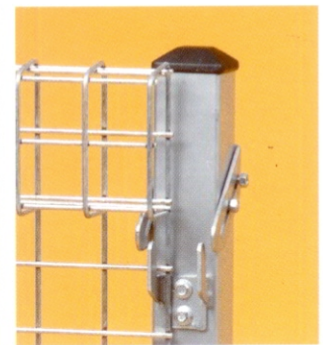
The bottom 152 mm x 152 mm x 5 mm thick fixing flange and plastic cap completes the assembly.

The Fence System COMPONENTS



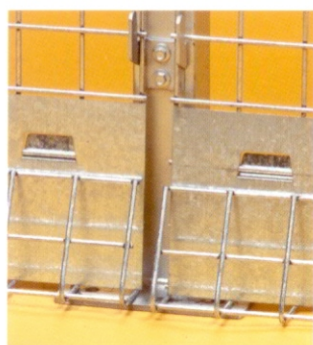
The Panel

Pre-galvanised welded wire mesh panels 1000 mm high x 2400 mm wide



The Slide and Lock Post

1005 mm high 50 mm x 50 mm square post with slide lock and fixing lugs



The Kickplate

150 mm high galvanised in-built bottom kickplate for protection to those working below



The Fixing Flange

152 mm square x 5 mm fixing flange with 4 - 13 mm diameter holes for use with Dynabolts



New South Wales

CCS Industries Edge Protection Fencing

Unit Sizes

Panel: Wire Ø 4 mm
Mesh 50 mm x 50 mm centres
Overall 1000 mm high x
2400 mm wide

Product Code: EDPR 10

Finish: Pre-galvanised

Mass: 13.14 kg

Slide and Lock Post:

1000 mm - 50 mm x 50 mm x 1.6 mm

Product Code: EP 5050

Type: Black RHS

Finish: Hot dipped galvanised

Mass: 2.5 kg

Kickplate:

150 mm x 2400 mm galvanised sheet,
locked into the panel

Fixing Flange:

152 mm x 152 mm x 5 mm hot dipped
galvanised steel plate

Fixings

Fixings should conform with AS 4100 for permissible working strength and size of bolts. The recommended fixings are four - 12 mm x 75 mm Dynabolts - supplied by others - securely fastening each post fixing flange to the concrete slab, stairwell, walkway, etc.

Installation

Two people can easily erect the CCS Edge Protection Fencing System.

Start from an appropriate point on the site and fix the first post through the bottom flange with 4 - 12 mm x 75 mm Dynabolts with the Slide and Lock assemblies facing into the building.

Attach the fence panel to the post using the Slide and Lock assemblies.

Note the rolled top and bottom of the panel face inside allowing the panel to fit flush against the post.

Attach the other end of the fence panel to a second post. Dynabolt the second post to the concrete and then tighten the fixings to the flange.

Attach a second panel to the second post as previous and repeat until project is complete.

Important Safety Note: With the Slide and Lock posts extra security is achieved by locking the latch using self-tapping screws in the hole provided at the back of the Slide and Lock assembly.



New South Wales

UNIT 4, 7 POWERS ROAD,
SEVEN HILLS NSW 2147

Free Call: 1800 177 000

Phone: 02 9838 8297

Facsimile: 02 9838 0707

Email: hiresales@readyfence.com

Queensland

PO Box 1137, Toowong QLD 4066

Free Call: 1800 350 120

Email: dgrant@readyfence.com

